

# CERTIFICATE OF ANALYSIS

## ISO/IEC 17025:2017 ACCREDITATION #103104



Order #: 93275  
 Order Name: Level Select  
 Sports Cream Level 2 - 1200mg  
 3oz (FG)  
 Batch#: 2203009  
 Received: 04/07/2022  
 Completed: 04/12/2022

Kadenwood Brands  
<https://selectmylevel.com>  
[info@selectmylevel.com](mailto:info@selectmylevel.com)



### Sample



### Cannabinoid Summary

N/D D9-THC	1.679% Total CBD
1,427.1 mg Cannabinoids per unit	1,427.1 mg CBD per unit

1 unit = 85 grams per unit x  
 Cannabinoid concentration

### Batch Info

ID:  
 Date:  
 Best By Date:  
 Size:  
 Total Qty Produced:

### Report Download Info

URL: <https://www.verifycbd.com/report/7f85z16c5b>

### Testing Summary

<b>Tested</b> Cannabinoids	<b>Pass</b> Pesticide	<b>Tested</b> Terpenes
<b>Tested</b> Microbial	<b>Pass</b> Residual Solvents	<b>Pass</b> Mycotoxin
<b>Pass</b> Heavy Metals	<b>Tested</b> Water Activity	<b>Pass</b> Filt and Foreign

D9-THC
THCA
CBD 1.679%
CBDA
CBDV
CBC
CBN
CBG
CBGA
D8-THC
THCV

### Instruments

GCMS-MS - Shimadzu GCMS-TQ8040  
 LCMS-MS - Shimadzu LCMS-8060  
 Headspace GCMS - Shimadzu GCMS QP2020 with HS20  
 SHIMADZU INTEGRATED UPLC-PDA  
 ICP-MS - Shimadzu ICPMS-2030  
 LC-MS - Shimadzu LCMS-8060  
 PCR - Agilent AriaMX  
 HD-3A Water Activity Meter  
 Amscope Simul-Focal Trinocular Stereo Zoom Microscope

### SOPS

Cannabinoids Test - GSL SOP 400  
 Terpenes Test - GSL SOP 404  
 Pesticide Analysis - GSL SOP 401  
 Residual Solvents - GSL SOP 405  
 Heavy Metals Analysis- GSL SOP 403  
 Mycotoxin Analysis - GSL SOP 401  
 Microbial Analysis - GSL SOP 406  
 Water Activity - GSL SOP 407  
 Filth and Foreign Materials Analysis - GSL SOP 409

Diana Asensio, M.S.,  
 Lab Director

**Green Scientific Labs**  
[info@greenscientificlabs.com](mailto:info@greenscientificlabs.com)  
 1-833 TEST-CBD



This COA is governed by the terms and conditions listed on: <https://www.greenscientificlabs.com/terms-of-use.php>

# CERTIFICATE OF ANALYSIS

## ISO/IEC 17025:2017 ACCREDITATION #103104



Order #: 93275  
 Order Name: Level Select  
 Sports Cream Level 2 - 1200mg  
 3oz (FG)  
 Batch#: 2203009  
 Received: 04/07/2022  
 Completed: 04/12/2022

Kadenwood Brands  
<https://selectmylevel.com>  
[info@selectmylevel.com](mailto:info@selectmylevel.com)



### Sample



### Cannabinoids Test

HPLC-DAD  
 GSL SOP 400

UPLOADED: 04/08/2022 12:31:27

Cannabinoids	LOQ(mg/g)	LOD(mg/g)	weight(%)	mg/g	mg/unit
D9-THC	0.1954	0.0645	N/D	N/D	N/D
THCA	0.1954	0.0645	N/D	N/D	N/D
CBD	0.1954	0.0645	<b>1.679%</b>	<b>16.789</b>	<b>1,427.065</b>
CBDA	0.1954	0.0645	N/D	N/D	N/D
CBDV	0.1954	0.0645	N/D	N/D	N/D
CBC	0.1954	0.0645	N/D	N/D	N/D
CBN	0.1954	0.0645	N/D	N/D	N/D
CBG	0.1954	0.0645	B/LOQ	B/LOQ	B/LOQ
CBGA	0.1954	0.0645	N/D	N/D	N/D
D8-THC	0.1954	0.0645	N/D	N/D	N/D
THCV	0.1954	0.0645	N/D	N/D	N/D
TOTAL D9-THC			N/D	N/D	N/D
TOTAL CBD*			<b>1.679%</b>	<b>16.789</b>	<b>1,427.1</b>
TOTAL CANNABINOIDS			<b>1.679%</b>	<b>16.789</b>	<b>1,427.1</b>

**N/D**

Total D9-THC

**1.679%**

Total CBD

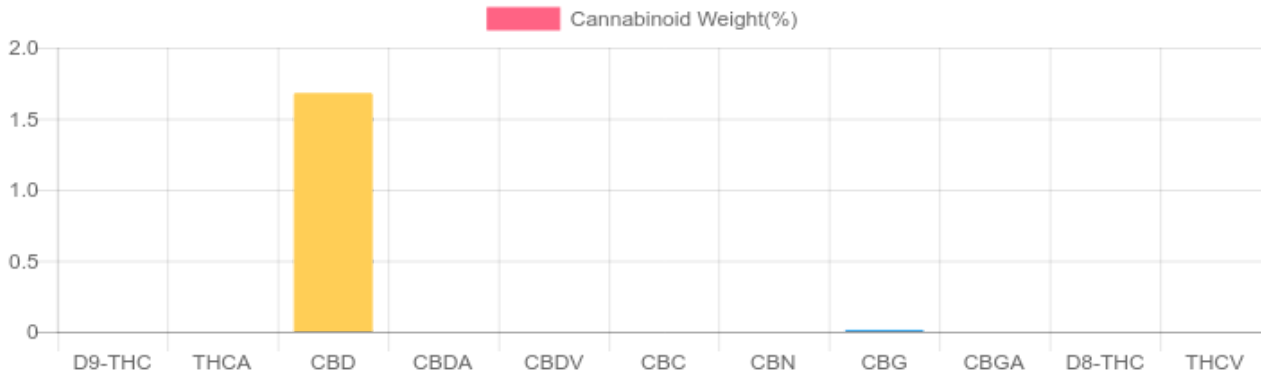
**1,427.1 mg**

Cannabinoids per unit

**1,427.1 mg**

CBD per unit

1 unit = 85 grams per unit x Cannabinoid concentration



\*Total CBD = CBD + CBDA x 0.877  
 N/D - Not Detected, B/LOQ - Below Limit of Quantification

Diana Asensio, M.S.,  
 Lab Director

**Green Scientific Labs**  
[info@greenscientificlabs.com](mailto:info@greenscientificlabs.com)  
 1-833 TEST CBD



This COA is governed by the terms and conditions listed on: <https://www.greenscientificlabs.com/terms-of-use.php>

# CERTIFICATE OF ANALYSIS

## ISO/IEC 17025:2017 ACCREDITATION #103104



Order #: 93275  
 Order Name: Level Select  
 Sports Cream Level 2 - 1200mg  
 3oz (FG)  
 Batch#: 2203009  
 Received: 04/07/2022  
 Completed: 04/12/2022

Kadenwood Brands  
<https://selectmylevel.com>  
[info@selectmylevel.com](mailto:info@selectmylevel.com)



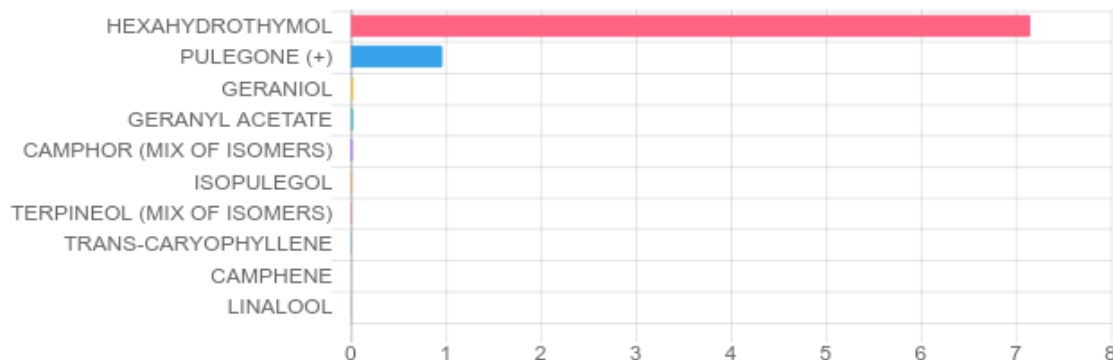
### TERPENES: TOTAL (8.232%)

GSL SOP 404  
 Uploaded: 04/08/2022 17:02:21

GC-FID

Terpene	Results (%)	LOQ (%)	LOD (%)	Terpene	Results (%)	LOQ (%)	LOD (%)
3-CARENE	N/D	0.003%	0.001%	GERANIOL	0.031%	0.003%	0.001%
A-BISABOLOL	N/D	0.003%	0.001%	GERANYL ACETATE	0.025%	0.003%	0.001%
A-CEDRENE	N/D	0.003%	0.001%	GUAJOL	N/D	0.003%	0.001%
A-HUMULENE	N/D	0.003%	0.001%	HEXAHYDROTHYMOL	7.153%	0.003%	0.001%
A-PINENE	N/D	0.003%	0.001%	ISOBORNEOL	N/D	0.003%	0.001%
A-TERPINENE	N/D	0.003%	0.001%	ISOPULEGOL	0.012%	0.003%	0.001%
B-MYRCENE	N/D	0.003%	0.001%	LIMONENE	B/LOQ	0.003%	0.001%
B-PINENE	N/D	0.003%	0.001%	LINALOOL	0.004%	0.003%	0.001%
BORNEOL (MIX OF ISOMERS)	N/D	0.003%	0.001%	NEROL	0.003%	0.003%	0.001%
CAMPHENE	0.004%	0.003%	0.001%	P-MENTHA-1, 5-DIENE	N/D	0.003%	0.001%
CAMPHOR (MIX OF ISOMERS)	0.019%	0.003%	0.001%	PULEGONE (+)	0.966%	0.003%	0.001%
CARYOPHYLLENE OXIDE	N/D	0.003%	0.001%	SABINENE HYDRATE	N/D	0.003%	0.001%
CEDROL	N/D	0.003%	0.001%	TERPINEOL (MIX OF ISOMERS)	0.009%	0.003%	0.001%
CIS-NEROLIDOL	N/D	0.003%	0.001%	TERPINOLENE	N/D	0.003%	0.001%
CIS-OCIMENE	B/LOQ	0.003%	0.001%	TRANS-CARYOPHYLLENE	0.006%	0.003%	0.001%
ENDO-FENCHYL ALCOHOL	N/D	0.003%	0.001%	TRANS-NEROLIDOL	N/D	0.003%	0.001%
EUCALYPTOL	N/D	0.003%	0.001%	TRANS-OCIMENE	B/LOQ	0.003%	0.001%
FENCHONE (MIX OF ISOMERS)	N/D	0.003%	0.001%	VALENCENE	N/D	0.003%	0.001%
GAMMA-TERPINENE	N/D	0.003%	0.001%				

### Top Terpenes Results:



Diana Asensio, M.S.,  
 Lab Director

Green Scientific Labs  
[info@greenscientificlabs.com](mailto:info@greenscientificlabs.com)  
 1-833 TEST CBD



This COA is governed by the terms and conditions listed on: <https://www.greenscientificlabs.com/terms-of-use.php>

# CERTIFICATE OF ANALYSIS

## ISO/IEC 17025:2017 ACCREDITATION #103104



Order #: 93275  
 Order Name: Level Select  
 Sports Cream Level 2 - 1200mg  
 3oz (FG)  
 Batch#: 2203009  
 Received: 04/07/2022  
 Completed: 04/12/2022

Kadenwood Brands  
<https://selectmylevel.com>  
[info@selectmylevel.com](mailto:info@selectmylevel.com)



### PESTICIDE ANALYSIS:

GSL SOP 401

UPLOADED: 04/11/2022 12:48:29

GC-MS/MS

Pesticide	Action Level (ppm)	Results (ppm)	LOQ (ppm)	LOD (ppm)
CAPTAN	0.700	N/D	0.100	0.010
CHLORDANE	0.100	N/D	0.100	0.010
CHLORFENAPYR	0.100	N/D	0.100	0.010
COUMAPHOS	0.100	N/D	0.100	0.010

Pesticide	Action Level (ppm)	Results (ppm)	LOQ (ppm)	LOD (ppm)
CYFLUTHRIN	2.000	N/D	0.100	0.010
CYPERMETHRIN	1.000	N/D	0.100	0.010
PARATHION-METHYL	0.100	N/D	0.100	0.010
PENTACHLORONITROBENZENE	0.100	N/D	0.100	0.010

LC-MS/MS

Pesticide	Action Level (ppm)	Results (ppm)	LOQ (ppm)	LOD (ppm)
ABAMECTIN B1A	0.100	N/D	0.005	0.005
ACEPHATE	0.100	N/D	0.005	0.001
ACEQUINOCYL	0.100	N/D	0.005	0.005
ACETAMIPRID	0.100	N/D	0.005	0.005
ALDICARB	0.100	N/D	0.005	0.005
AZOXYSTROBIN	0.100	N/D	0.005	0.001
BIFENAZATE	0.100	N/D	0.005	0.001
BIFENTHRIN	3.000	N/D	0.005	0.005
BOSCALID	0.100	N/D	0.005	0.005
CARBARYL	0.500	N/D	0.005	0.001
CARBOFURAN	0.100	N/D	0.005	0.001
CHLORANTRANILIPROLE	10.000	N/D	0.005	0.005
CHLORPYRIFOS	0.100	N/D	0.005	0.005
CLOFENTEZINE	0.100	N/D	0.005	0.005
DAMINOZIDE	0.100	N/D	0.005	0.001
DIAZINON	0.100	N/D	0.005	0.005
DICHLORVOS	0.100	N/D	0.005	0.001
DIMETHOATE	0.100	N/D	0.005	0.001
DIMETHOMORPH	2.000	N/D	0.005	0.001
ETHOPROPHOS	0.100	N/D	0.005	0.001
ETOFENPROX	0.100	N/D	0.005	0.005
ETOXAZOLE	0.100	N/D	0.050	0.005
FENHEXAMID	0.100	N/D	0.005	0.001
FENOXYCARB	0.100	N/D	0.005	0.005
FENPYROXIMATE	0.100	N/D	0.005	0.005
FIPRONIL	0.100	N/D	0.005	0.005
FLONICAMID	0.100	N/D	0.025	0.005
FLUDIOXONIL	0.100	N/D	0.005	0.005
HEXYTHIAZOX	0.100	N/D	0.005	0.005

Pesticide	Action Level (ppm)	Results (ppm)	LOQ (ppm)	LOD (ppm)
IMAZALIL	0.100	N/D	0.005	0.001
IMIDACLOPRID	5.000	N/D	0.005	0.001
KRESOXIM-METHYL	0.100	N/D	0.005	0.005
MALATHION	0.500	N/D	0.005	0.001
METALAXYL	2.000	N/D	0.005	0.001
METHIOCARB	0.100	N/D	0.005	0.001
METHOMYL	1.000	N/D	0.005	0.001
MEVINPHOS	0.100	N/D	0.005	0.001
MYCLOBUTANIL	0.100	N/D	0.005	0.005
NALED	0.100	N/D	0.005	0.001
OXAMYL	0.500	N/D	0.005	0.001
PACLOBUTRAZOL	0.100	N/D	0.005	0.005
PERMETHRINS	0.500	N/D	0.005	0.005
PHOSMET	0.100	N/D	0.005	0.001
PIPERONYL	3.000	N/D	0.005	0.005
BUTOXIDE	0.100	N/D	0.005	0.005
PRALLETHRIN	0.100	N/D	0.010	0.005
PROPICONAZOLE	0.100	N/D	0.005	0.001
PROPOXUR	0.100	N/D	0.005	0.005
PYRETHRINS	0.500	N/D	0.005	0.005
PYRIDABEN	0.100	N/D	0.005	0.005
SPINETORAM	0.100	N/D	0.005	0.005
SPINOSAD	0.100	N/D	0.005	0.005
SPIROMESIFEN	0.100	N/D	0.005	0.001
SPIROTETRAMAT	0.100	N/D	0.005	0.005
SPIROXAMINE	0.100	N/D	0.005	0.001
TEBUCONAZOLE	0.100	N/D	0.005	0.001
THIACLOPRID	0.100	N/D	0.005	0.001
THIAMETHOXAM	5.000	N/D	0.005	0.001
TRIFLOXYSTROBIN	0.100	N/D	0.005	0.005

N/D = Not Detected, A/LOQ = Above LOQ Level, B/LOQ = Below LOQ Level, B/LOD = Below LOD Level

Diana Asensio, M.S.,  
 Lab Director

**Green Scientific Labs**  
[info@greenscientificlabs.com](mailto:info@greenscientificlabs.com)  
 1-833 TEST CBD



This COA is governed by the terms and conditions listed on: <https://www.greenscientificlabs.com/terms-of-use.php>

# CERTIFICATE OF ANALYSIS

## ISO/IEC 17025:2017 ACCREDITATION #103104



Order #: 93275  
Order Name: Level Select  
Sports Cream Level 2 - 1200mg  
3oz (FG)  
Batch#: 2203009  
Received: 04/07/2022  
Completed: 04/12/2022

Kadenwood Brands  
<https://selectmylevel.com>  
[info@selectmylevel.com](mailto:info@selectmylevel.com)



### RESIDUAL SOLVENTS:

HS-GC-MS

GSL SOP 405

Uploaded: 04/11/2022 16:08:05

Residual Solvent	Action Level (ppm)	Results (ppm)	LOQ (ppm)	LOD (ppm)
1,1-DICHLOROETHENE	8	N/D	0.63	0.6
1,2-DICHLOROETHANE	2	N/D	0.12	0.012
1,2-DICHLOROETHENE	5	N/D	0.73	0.09
ACETONE	5,000	B/LOQ	140	9
ACETONITRILE	410	N/D	25	0.72
BENZENE	1	N/D	1	0.6
BUTANE	5,000	N/D	50	48
CHLOROFORM	1	N/D	1	0.5
ETHANOL	5,000	B/LOQ	140	12
ETHYL ACETATE	5,000	N/D	140	2.4
ETHYL ETHER	5,000	N/D	140	6
ETHYLENE OXIDE	1	N/D	2	0.6
ISOPROPYL ALCOHOL	5,000	B/LOQ	140	3
METHANOL	3,000	B/LOQ	100	6
METHYLENE CHLORIDE	125	N/D	1.5	1.5
N-HEPTANE	5,000	N/D	140	6
N-HEXANE	290	N/D	18	0.06
PENTANE	5,000	N/D	140	9
PROPANE	5,000	N/D	30	30
TOLUENE	890	N/D	53	0.9
TRICHLOROETHENE	1	N/D	1	0.3
XYLENES	150	N/D	130	1.8

Diana Asensio, M.S.,  
Lab Director

Green Scientific Labs  
[info@greenscientificlabs.com](mailto:info@greenscientificlabs.com)  
1-833 TEST CBD



This COA is governed by the terms and conditions listed on: <https://www.greenscientificlabs.com/terms-of-use.php>

# CERTIFICATE OF ANALYSIS

## ISO/IEC 17025:2017 ACCREDITATION #103104



Order #: 93275  
 Order Name: Level Select  
 Sports Cream Level 2 - 1200mg  
 3oz (FG)  
 Batch#: 2203009  
 Received: 04/07/2022  
 Completed: 04/12/2022

Kadenwood Brands  
<https://selectmylevel.com>  
[info@selectmylevel.com](mailto:info@selectmylevel.com)



### Microbial Analysis:

Microbial Analysis GSL SOP 406

Uploaded: 04/09/2022 19:42:41

### MICROBIAL ANALYSIS:

Test	SOP	Test Method	Device Used	Allowable Criteria	Actual Result
TOTAL YEAST AND MOLD	406.01	QPCR	ARIAMX PCR	NOT APPLICABLE	< 1,000 CFU/G
AEROBIC BACTERIA COUNT	406.01	QPCR	ARIAMX PCR	NOT APPLICABLE	< 10,000 CFU/G
ENTEROBACTERIACEAE	406.01	QPCR	ARIAMX PCR	NOT APPLICABLE	< 100 CFU/G
COLIFORM	406.01	QPCR	ARIAMX PCR	NOT APPLICABLE	< 100 CFU/G
ASPERGILLUS FUMIGATUS***	406.01	REAL-TIME PCR	ARIAMX PCR	< 1 CFU/G	NOT DETECTED
ASPERGILLUS NIGER***	406.01	REAL-TIME PCR	ARIAMX PCR	< 1 CFU/G	NOT DETECTED
ASPERGILLUS FLAVUS***	406.01	REAL-TIME PCR	ARIAMX PCR	< 1 CFU/G	NOT DETECTED
ASPERGILLUS TERREUS***	406.01	REAL-TIME PCR	ARIAMX PCR	< 1 CFU/G	NOT DETECTED
STEC E. COLI*	406.01	REAL-TIME PCR	ARIAMX PCR	< 1 CFU/G	NOT DETECTED
SALMONELLA*	406.01	REAL-TIME PCR	ARIAMX PCR	< 1 CFU/G	NOT DETECTED

† USP 61 (enumeration of bacteria TAC, TYM, and ENT/Coliform), USP 62 (identifying specific species E.coli Aspergillus etc)

\* STEC and Salmonella run as Multiplex

\*\* CFU/g Calculation based on MIP/Extract matrix

\*\*\* Flavus = 2 Copies of DNA / Fumigatis = 2 Copies of DNA Niger = 20 Copies of DNA / Terrus = 10 copies of DNA

Diana Asensio, M.S.,  
 Lab Director

Green Scientific Labs  
[info@greenscientificlabs.com](mailto:info@greenscientificlabs.com)  
 1-833 TEST CBD



This COA is governed by the terms and conditions listed on: <https://www.greenscientificlabs.com/terms-of-use.php>

# CERTIFICATE OF ANALYSIS

## ISO/IEC 17025:2017 ACCREDITATION #103104



Order #: 93275  
Order Name: Level Select  
Sports Cream Level 2 - 1200mg  
3oz (FG)  
Batch#: 2203009  
Received: 04/07/2022  
Completed: 04/12/2022

Kadenwood Brands  
<https://selectmylevel.com>  
[info@selectmylevel.com](mailto:info@selectmylevel.com)



### Mycotoxin Analysis:

LC-MS/MS  
GSL SOP 401

Uploaded: 04/11/2022 12:48:29

Analyte	LOQ (ppb)	LOD (ppb)	Action Lvl (ppb)	Results (ppb)
AFLATOXIN B1	1	1	20	N/D
AFLATOXIN B2	1	1	20	N/D
AFLATOXIN G1	1	1	20	N/D
AFLATOXIN G2	1	1	20	N/D
OCHRATOXIN A	1	1	20	N/D

### Heavy Metals Analysis:

ICP-MS  
GSL SOP 403

Uploaded: 04/08/2022 16:28:11

Metal	LOQ (ppb)	LOD (ppb)	Action Level (ppb)	Result (ppb)
ARSENIC (AS)	75	20	200	N/D
CADMIUM (CD)	75	20	200	N/D
MERCURY (HG)	75	20	100	N/D
LEAD (PB)	75	20	500	N/D

### Moisture Analysis:

Shimadzu MOC63U Moisture Balance - GSL SOP 411

Uploaded: 04/07/2022 20:47:00

#### Moisture %

63.6%

### Water Activity:

Water Activity Meter

Uploaded: 04/07/2022 20:47:01

#### Water

0.82

### Filth and Foreign Materials Analysis:

Microscope - Amscope Simul-Focal Trinocular Stereo Zoom Microscope - GSL SOP 409

Uploaded: 04/07/2022 20:16:31

Pass: No Foreign Materials Detected

Diana Asensio, M.S.,  
Lab Director

Green Scientific Labs  
[info@greenscientificlabs.com](mailto:info@greenscientificlabs.com)  
1-833 TEST CBD

